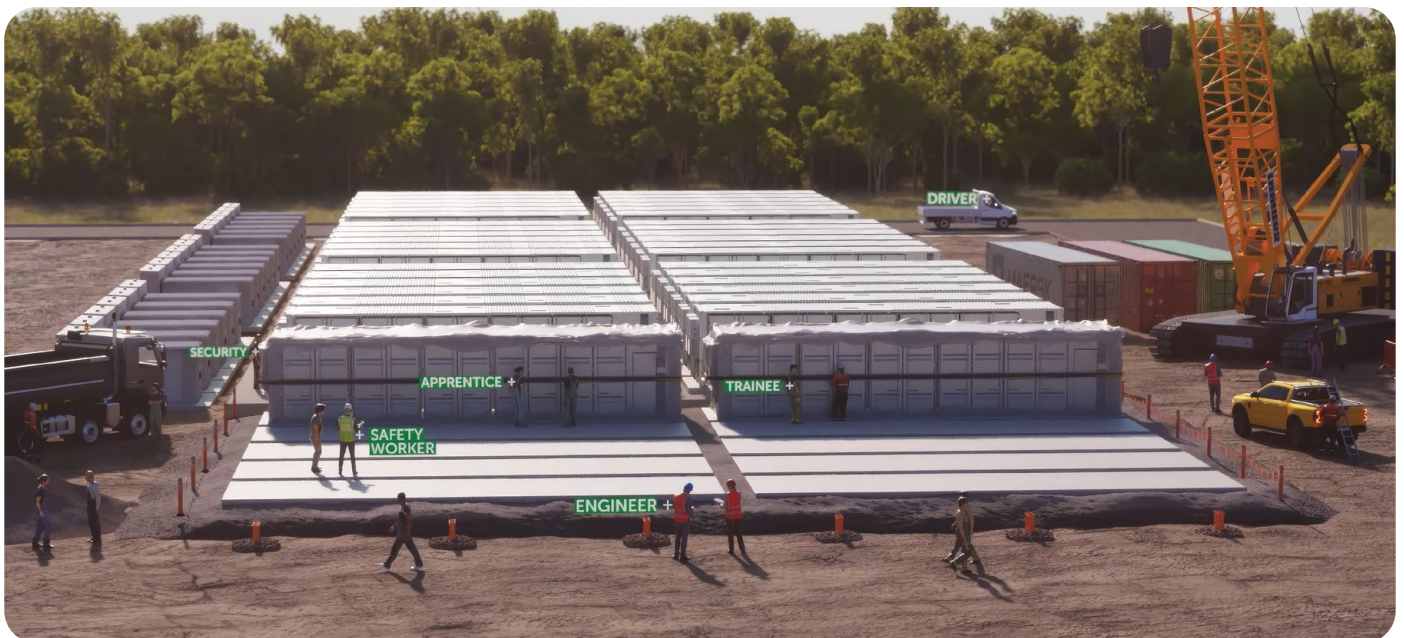


Mt Piper BESS

Local opportunities during construction

Acknowledgement

We acknowledge that the Mt Piper Battery Energy Storage System will be developed and operate on the traditional Country of the Wiradjuri People. We recognise their continued connection to land, waterways and community, and we pay our respects to Elders past and present.



We are progressing the development of a battery energy storage system (BESS) in Lithgow on land we own next to the existing Mt Piper Power Station.

Storing 500MW of energy when supply is high and delivering up to 4 hours of energy when we need it most, the BESS will be developed in two stages.

Built in Lithgow, creating local opportunities

Lithgow has powered NSW for generations.

Now, as the energy system evolves, our BESS is part of the next chapter — creating jobs, building skills and strengthening local business capability.

This project isn't being delivered to the region. It is being delivered in Lithgow, with Lithgow.

Local jobs — built here

Lithgow has built deep operational capability over decades. Battery storage builds on that foundation. We are committed to maximising local employment, with a strong focus on sourcing as much of the workforce as possible from the Lithgow region.

Construction roles will include:

- Civil and electrical trades
- Mechanical and technical services
- Engineering support
- Environmental and site services
- Renewable energy infrastructure

This is an opportunity for local workers to apply their skills to the next generation of energy infrastructure close to home.

We are ensuring the pathways into infrastructure and energy are inclusive by removing barriers and actively supporting women (including women in trades), First Nations peoples and culturally diverse communities through equitable hiring, flexible work, leadership development and a workplace culture where everyone can thrive.

School leavers & new career pathways

Lithgow's workforce capability is one of its greatest assets and we are investing in the next generation.

Our BESS will support:

- Apprenticeships and traineeships
- Entry-level roles in construction and renewable energy

For school leavers, this is a pathway into a growing industry that is central to NSW's energy future.

We support new workers through:

- Structured on-the-job training
- Mentorship from experienced trades and supervisors
- Strong safety systems
- Clear pathways for ongoing employment

Opportunities for local business

We want Lithgow to host and directly benefit from the infrastructure it helps to build. Local suppliers and contractors are critical to delivering this project.

Types of work may include:

- Civil works and earthworks
- Electrical and mechanical trades
- Equipment hire
- Transport and logistics
- Catering and site services

Our BESS provides an opportunity for local businesses to scale capability into new energy technologies and future projects.

To position your business:

- Keep your ICN Gateway profile up to date
- Demonstrate strong safety systems
- Highlight your local workforce
- Attend supplier briefings and information sessions
- Consider partnering with other local businesses

We are working closely with:

- Lithgow Business Chamber
- Regional Development Australia
- Industry Capability Network (ICN)

These partnerships help ensure local businesses are aware of opportunities and positioned to compete successfully.

Working with employment & training providers

By working together, we can ensure Lithgow remains a skilled and competitive energy region for decades to come.

We welcome engagement with:


- TAFEs and vocational training providers
- Employment agencies
- Schools and youth programs
- Programs supporting women, First Nations peoples and other underrepresented groups


Stay Connected


To stay informed about upcoming opportunities:

- Monitor ICN Gateway for work packages
- Watch for job advertisements from project contractors
- Attend supplier and community information sessions
- Connect with the Lithgow Business Chamber and local networks

Engage with us

 mtpiperBESS.com.au

 community@energyaustralia.com.au

 1800 574 947